

FJ Cruiser Features

INTERIOR

ENTERTAINMENT & CONNECTIVITY

AM/FM/CD Audio System, MP3/WMA Playback	●
SiriusXM® Satellite Radio	●
USB Input Port, Auxiliary Input Jack	●
Bluetooth® ³ Hands-Free Phone Connectivity & Wireless Audio Streaming	●
6-Speakers	●
Steering Wheel Bluetooth® ³ & Audio Controls	●

COMFORT & CONVENIENCE

Air Conditioning	●
Cabin Air Filter, Rear Seat Heater Ducts	●
Power Door Locks	●
Power Windows w/Driver Side Auto Up/Down	●
Black-on-White Gauges, Tachometer, Voltmeter, Water Temperature Gauge	●
Auto-Dimming Rear View Mirror w/Integrated Backup Camera	●
Dual Vanity Mirrors	●
3-Spoke, Tilt Steering Wheel	●
Fabric Headliner	●
Exterior Colour-Keyed Centre Instrument Panel Trim	●
Metallic Dash Accents	●
Rubber Type Floor & Deck	●
All-Season Floor Mats	●
Digital Clock	●
Door Map Pockets	●
Front Passenger Seat Back Pocket	●
Front & Rear Cupholders	●
Cargo Area Side Storage Compartments	●
Cargo Area Tie-Down Rings	●
Shopping Bag Hooks, Coat Hooks	●
Map Lamps, Cargo Lamp	●
Accessory Power Outlet (12 V)	●
Illuminated Entry, Illuminated Ignition Key	●

SEATING & TRIM

Front Bucket Seats	●
Water Repellent Fabric Seat Material	●
Driver Seat w/Recline, Vertical, Cushion Height Adjustments, Foldable Driver Armrest	●
Front Passenger Seat Recline Adjustments	●
60/40 Split Rear Bench Seat w/Fold-Down Seat Back	●
All-Position Vertically Adjustable Headrests	●

EXTERIOR

Two-Tone Colour-Keyed Body w/White Roof	●
High Solar Energy Absorbing Window Glass	●
Flip-Up Rear Hatch Glass	●
Electric Rear Window Defroster	●
Fender Flares	●
Rear Step Bumper	●
StyLED Splash Guards	●
Blacked-Out Side Window Frames	●
Dual, Manual, Adjustable Foldable Side View Mirrors	●
Rear Window Wiper/Washer	●
Variable Intermittent Front Wipers	●
Halogen Headlamps	●
Auto Headlamp Cancel Function	●

SAFETY

STAR SAFETY SYSTEM™ Star Safety System™ – includes Vehicle Stability Control (VSC) ⁵ , Traction Control (TRAC), Anti-lock Brake System (ABS), Electronic Brake-force Distribution (EBD), Brake Assist (BA) ⁶ & Smart Stop Technology (SST) ⁷	●
Dual-Stage Driver & Front Passenger Airbag Supplemental Restraint System (SRS) ¹	●
Front Seat-Mounted Side Airbags (SRS) ¹	●
Roll-Sensing Front & Rear Head/Side Curtain Airbags (SRS) ¹	●
Active Front Headrests w/Whiplash Protection	●
Front Seatbelt Pre-Tensioners & Force Limiters	●
All-Position 3-Point Lap & Shoulder Belts	●
Front Seatbelt Anchor Height Adjusters	●
Anchor Points for Child Restraint Seats	●
Engine Immobilizer	●
Side Impact Protection Door Beams	●
Front Tow Hook	●
Low Coolant Level, Low Washer Fluid, Door Ajar, Driver & Front Passenger Seatbelt Warning Indicators	●
Direct Tire Pressure Monitoring System	●

Toyota Canada Inc. Every effort has been made to ensure the specifications and equipment shown are accurate based on information available at time of printing. In some cases, certain changes in production capacity, standard equipment, options or product delays may occur which would not be reflected in this brochure. Toyota Canada Inc. reserves the right to make these changes without notice or obligation. The Toyota website toyota.ca - or your Toyota Dealer is your best source for up-to-date information.

Available Packages

Off-Road Package (5-Speed Automatic & 6-Speed Manual)

- Cruise Control, 4-Wheel Crawl Control (Automatic Only), Front/Rear Bilstein Shock Absorbers, Rear Privacy Glass, Roof Rack, Multi-Information Display (Outside Temperature Gauge, Inclinator, Floating Ball-Type Compass), Foldable Passenger Armrest, Power Adjustable Mirrors w/Image Lamps, Keyless Entry, Integrated Garage Door Opener, Cargo Area Mat, Overhead Console Box (Automatic Only)

Urban Package (5-Speed Automatic)

- JBL® Audio, 10-Speakers, Rear Subwoofer, 120 V/400-watt Power Outlet, Colour-Keyed Interior Door Trim, Leather-Wrapped Steering Wheel, Running Boards, Metallic Shift Knob, Cargo Area Mat, Backup Sensors, Rear Privacy Glass, Multi-Information Display (Outside Temperature Gauge, Inclinator, Floating Ball-Type Compass), Foldable Passenger Armrest, Power Adjustable Mirrors w/Image Lamps, Keyless Entry, Integrated Garage Door Opener, Cruise Control

FJ Cruiser Specifications

MECHANICAL

ENGINE

Type
4.0 Litre, V6, DOHC, 24-Valve, Dual Variable Valve Timing w/intelligence (Dual VVT-i), Sequential Multiport Electronic Fuel Injection, Electronic Throttle Control System w/intelligence (ETCS-i), Acoustic Control Induction System (ACIS)

Compression Ratio

10.4:1

Horsepower

260 hp @ 5600 rpm

Torque

271 lb.ft. @ 4400 rpm

DRIVETRAIN

Drive Configuration

Full-Time 4WD

Part-Time 4WD, Automatic Disconnecting Differential

Active Traction Control (A-TRAC), Rear Differential Lock, 2-Speed Transfer Case, Engine, Fuel Tank & Transfer Case Protector Plates

Crawl Control

Transmission

6-Speed, Manual

5-Speed, Automatic, Super Electronically Controlled Transmission (Super ECT), Overdrive, Gate-Type Shifter, Lock-Up Torque Converter

CHASSIS

Suspension

Front: Double-Wishbone w/Gas-Filled Shock Absorbers, Coil Springs, Stabilizer Bar

Rear: 4-Link Suspension w/Lateral Rod w/Coil Springs & Stabilizer Bar

Front/Rear: Bilstein Shock Absorbers

Brakes

Power-Assisted, Ventilated Front Discs, Solid Rear Discs

Steering

Rack & Pinion w/Variable Power Assist, Variable Gear Ratio Steering (VGRS)

Wheels & Tires

17" Aluminum Alloy Wheels, Wheel Locks

P265/70R17, All-Season Radials, Full Size Spare w/Alloy Wheel

an address or point of interest. Discrepancies may be encountered between the system and your actual location. Rely on your common sense to decide whether or not to follow a specified route. Detailed coverage is not available for every city or roadway. Optional periodic geographic updates are available at an additional cost. The Navigational systems in some vehicles are available with bilingual capability. Please see your Navigation System Owner's Manual and your Toyota Dealer for further details. (5) Vehicle Stability Control (VSC) is an electronic system designed to help the driver maintain vehicle control under adverse conditions. It is not a substitute for safe driving practices. Factors including speed, road conditions and driver steering input can all affect whether VSC will be effective in preventing a loss of control. Please see your Owner's Manual for further details. (6) Brake Assist is designed to help the driver take full advantage of the benefits of ABS. It is not a substitute for safe driving practices. Braking effectiveness also depends on proper brake-system maintenance and tire and road conditions.

DIMENSIONS

	<i>mm (in.)</i>
Length	4670 (183.9)
Width	1905 (75.0)
Height (Unloaded)	1830 (72.0) w/o Roof Rack
	2000 (78.7) w/Roof Rack
Wheelbase	2690 (105.9)
Track	Front: 1605 (63.2)
	Rear: 1605 (63.2)
Headroom	Front: 1050 (41.3)
	Rear: 1025 (40.3)
Legroom	Front: 1065 (41.9)
	Rear: 795 (31.3)
Shoulder Room	Front: 1484 (58.4)
	Rear: 1370 (53.9)

Turning Circle

m (ft.)

12.4 (40.7)

Ground Clearance

245 (9.6)

Approach Angle (degrees)

34

Departure Angle (degrees)

31

WEIGHT & CAPACITIES

Curb Weight

kg (lb)

Manual 1963 (4327)

Automatic 1967 (4336)

Seating Capacity

5

Cargo Capacity

litres (cu.ft.)

1891 (66.8) Behind Front Seats

790 (27.9) Behind Rear Seats

Fuel Capacity

litres (gal)

72 (15.8)

Towing Capacity

kg (lb)

2268 (5000)

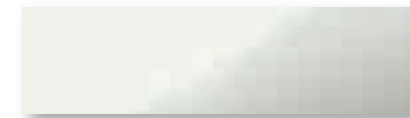
FUEL CONSUMPTION RATING²

	<i>L/100 km</i>	<i>mpg (imperial gallon)</i>
City/Highway/Combined	13.8/10.3/12.2	20/27/23
Manual		
Automatic	12.7/9.5/11.3	22/30/25

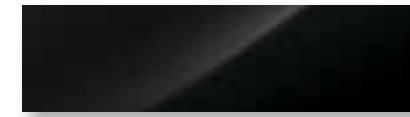
(7) Smart Stop Technology operates only in the event of certain simultaneous brake and gas pedal applications. When engaged, the system will reduce engine power to help the brakes bring the vehicle to a stop. Factors including speed, road conditions, driver input can all impact stopping distance. Smart Stop Technology is not a substitute for safe and attentive driving and does not guarantee instant stopping. Please see your Owner's Manual for further details. (8) Do not rely exclusively on the Blind Spot Monitor System to determine if a lane change is safe. Always look over your shoulder and use your turn signal before changing lanes. There are several limitations to the function, detection, range and clarity of the monitor. For a complete list of limitations and directions regarding use of the monitor system, please see your Owner's Manual.

Colours

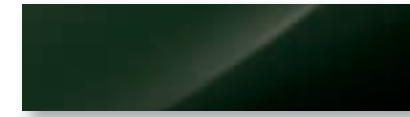
EXTERIOR COLOUR OPTIONS



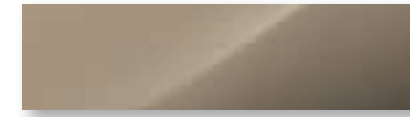
058 Iceberg



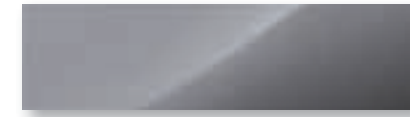
2KC (202) Black



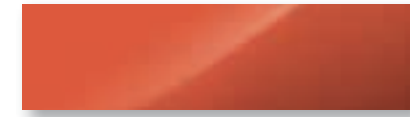
2KD (6V7) Army Green



2KP (4V6) Quicksand



2KY (1H5) Cement Grey Metallic



2LF (4W2) Magma

INTERIOR COLOUR

Dark Charcoal Fabric

Please see your Toyota Dealer for details.